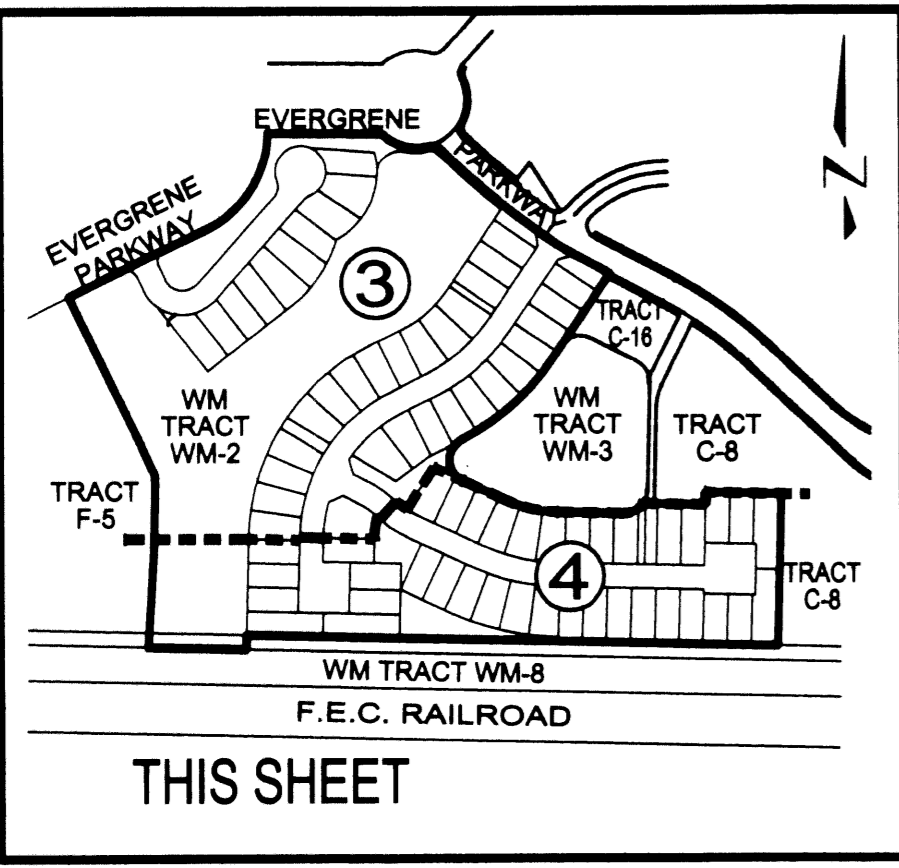
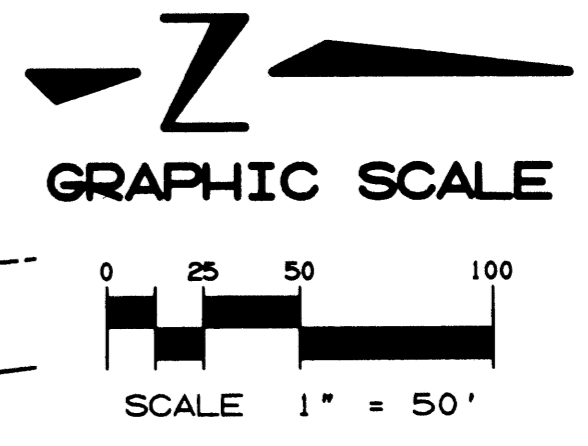
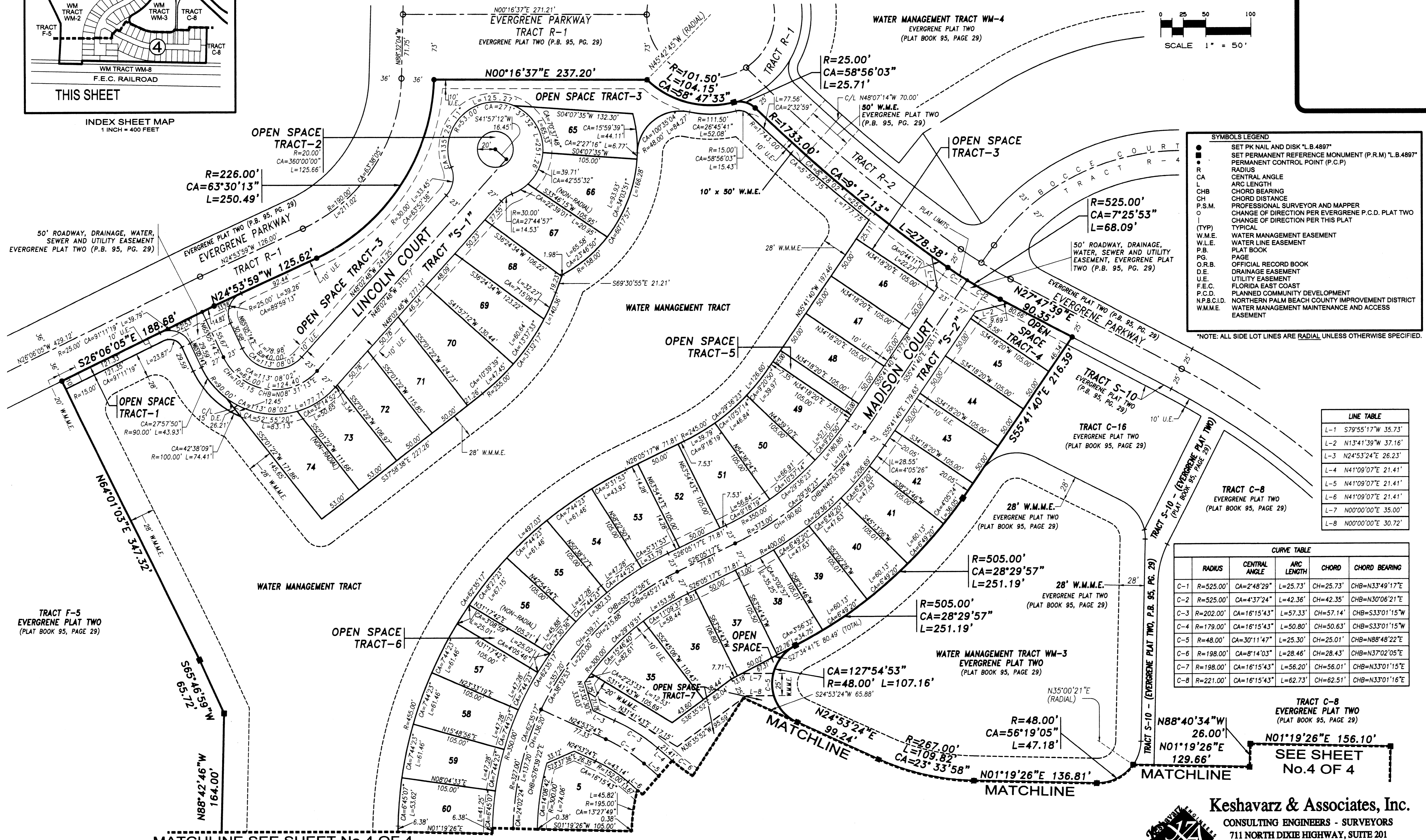


# EVERGRENE P.C.D. PLAT EIGHT

A REPLAT OF TRACTS F-4, F-6, S-17 AND WATER MANAGEMENT TRACT WM-2, EVERGRENE PLAT TWO AS RECORDED IN PLAT BOOK 95, PAGES 29 THROUGH 54 OF THE PUBLIC RECORDS OF PALM BEACH COUNTY, FLORIDA LYING IN THE SOUTHEAST QUARTER OF SECTION 25, TOWNSHIP 41 SOUTH, RANGE 42 EAST, CITY OF PALM BEACH GARDENS, PALM BEACH COUNTY, FLORIDA  
SHEET No. 3 OF 4 NOVEMBER 2003



INDEX SHEET MAP  
1 INCH = 400 FEET



**SYMBOLS LEGEND**

- SET PK NAIL AND DISK "L.B.4897"
- SET PERMANENT REFERENCE MONUMENT (P.R.M.) "L.B.4897"
- PERMANENT CONTROL POINT (P.C.P.)
- R RADIUS
- CA CENTRAL ANGLE
- L ARC LENGTH
- CHB CHORD BEARING
- CH CHORD DISTANCE
- P.S.M. PROFESSIONAL SURVEYOR AND MAPPER
- CHANGE OF DIRECTION PER EVERGRENE P.C.D. PLAT TWO
- CHANGE OF DIRECTION PER THIS PLAT
- (TYP) TYPICAL
- W.M.E. WATER MANAGEMENT EASEMENT
- W.L.E. WATER LINE EASEMENT
- P.B. PLAT BOOK
- PG. PAGE
- O.R.B. OFFICIAL RECORD BOOK
- D.E. DRAINAGE EASEMENT
- U.E. UTILITY EASEMENT
- F.E.C. FLORIDA EAST COAST
- P.C.D. PLANNED COMMUNITY DEVELOPMENT
- N.P.B.C.I.D. NORTHERN PALM BEACH COUNTY IMPROVEMENT DISTRICT
- W.M.M.E. WATER MANAGEMENT MAINTENANCE AND ACCESS EASEMENT

\*NOTE: ALL SIDE LOT LINES ARE RADIAL UNLESS OTHERWISE SPECIFIED.

**LINE TABLE**

LINE	BEARING	DISTANCE
L-1	S79°55'17"W	35.73'
L-2	N13°41'39"W	37.16'
L-3	N2°53'24"E	26.23'
L-4	N41°09'07"E	21.41'
L-5	N41°09'07"E	21.41'
L-6	N41°09'07"E	21.41'
L-7	N00°00'00"E	35.00'
L-8	N00°00'00"E	30.72'

**CURVE TABLE**

CURVE	RADIUS	CENTRAL ANGLE	ARC LENGTH	CHORD	CHORD BEARING
C-1	R=525.00'	CA=2°48'29"	L=25.73'	CH=25.73'	CHB=N33°49'17"E
C-2	R=525.00'	CA=4°37'24"	L=42.36'	CH=42.35'	CHB=N30°06'21"E
C-3	R=202.00'	CA=16°15'43"	L=57.33'	CH=57.14'	CHB=S33°01'15"W
C-4	R=179.00'	CA=16°15'43"	L=50.80'	CH=50.63'	CHB=S33°01'15"W
C-5	R=48.00'	CA=30°11'47"	L=25.30'	CH=25.01'	CHB=N88°48'22"E
C-6	R=198.00'	CA=8°14'03"	L=28.46'	CH=28.43'	CHB=N37°02'05"E
C-7	R=198.00'	CA=16°15'43"	L=56.20'	CH=56.01'	CHB=N33°01'15"E
C-8	R=221.00'	CA=16°15'43"	L=62.73'	CH=62.51'	CHB=N33°01'16"E

TRACT C-8  
EVERGRENE PLAT TWO  
(PLAT BOOK 95, PAGE 29)  
N88°40'34"W  
26.00'  
N01°19'26"E  
129.66'  
N01°19'26"E 156.10'  
SEE SHEET  
No.4 OF 4

MATCHLINE SEE SHEET No.4 OF 4

**Keshavarz & Associates, Inc.**  
CONSULTING ENGINEERS - SURVEYORS  
711 NORTH DIXIE HIGHWAY, SUITE 201  
West Palm Beach, Florida 33401  
Tel: (561) 689-8600 Fax: (561) 689-7476 LB 4897  
THIS INSTRUMENT WAS PREPARED BY MANUEL A. GUTIERREZ, PSM  
PROFESSIONAL SURVEYOR AND MAPPER NO. 4102  
IN THE OFFICES OF KESHAVARZ & ASSOCIATES, INC.  
11/19/03 10:02:37 AM EST